

Property

Est. 2004, Issue 288

WESTERN CAPE

FEBRUARY/ MARCH 2013

Winner of 10 publishing awards

decor, trends, luxury, design & real estate

SMALL
SPACES
REINTERPRETED

THE
AGE OF
ENLIGHTENMENT

AWARD-
WINNING
ARCHITECTURE

HERITAGE
HOLIDAY HOME

PSA R34.95 (incl. VAT)
Other countries R21.90 (excl. Tax)
Private Home, Simon's Town



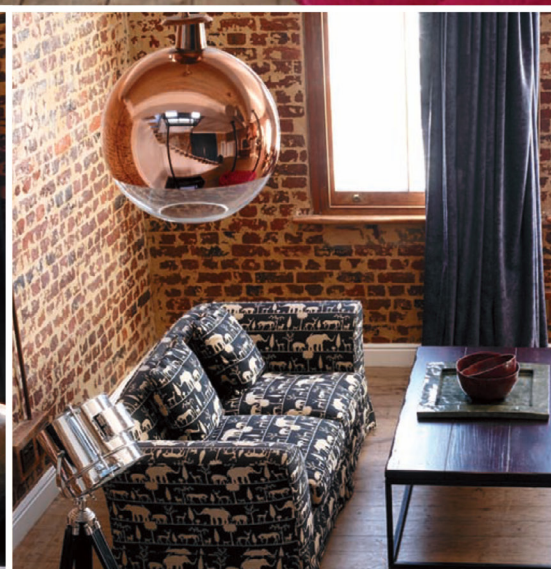
THE ABCs OF RESTORATION

A good dose of restoration and glamour has been used to create this unusual seaside home

Words Genevieve Fisher







Opening page The facade is sympathetic to the building's Heritage status. **This page, clockwise from top** The fuchsia sofa and baby grand piano set the glamorous tone for the rest of the house; retro copper pendant lights are juxtaposed against raw brickwork in the living areas.

“I thought about the prospect of creating a New York-style loft overlooking the sea and set about achieving this, whilst sensitively preserving its historical importance”

What attracted the homeowners to this Simon's Town property was not only its location, but also the potential of this 'grand piece of architecture'. This home, formerly a dilapidated youth hostel, is situated across the road from the naval base and overlooks the False Bay coast. The owner says: 'She was in such a sad state when we bought her that the underpinnings of the building were at severe risk as a result of the removal of the water-retaining trees on the mountain behind. She looked set to move right into the sea!'

The couple, previously from Johannesburg, came across this large Heritage building, ABC, while they were searching for a seaside holiday home. It was built as a bakery servicing the SA Navy in the 1800s. 'I thought about the prospect of creating a New York-style loft overlooking the sea and set about achieving this, whilst sensitively preserving its historical importance,' says the owner. Most importantly, it needed to be able to easily accommodate the couple's young children and their pet dogs.





Clockwise from top The sparkling kitchen countertop provides a focal point; spaciousness is an advantage of old homes; antique elements tone down the glitz.

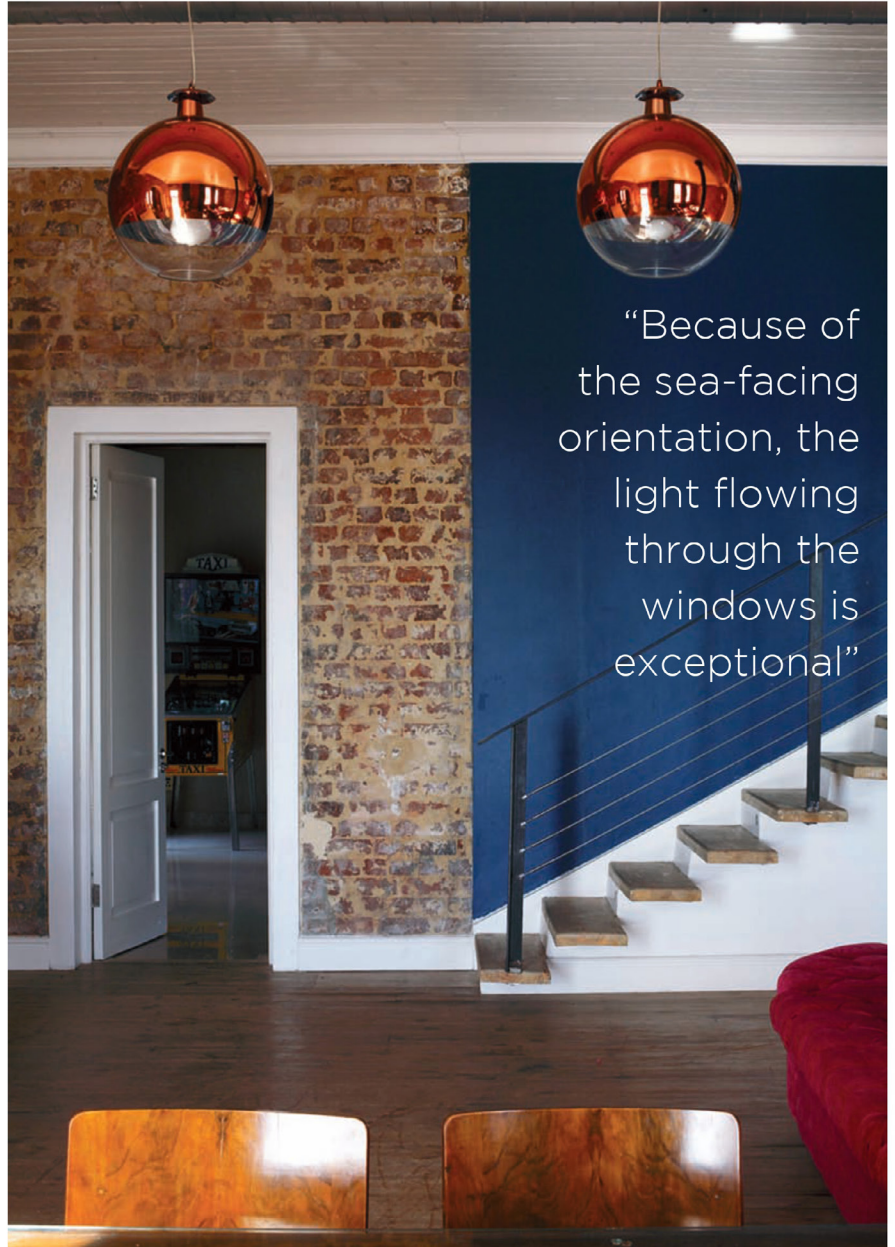
But, first things first: the building had to be rescued from structural demise and extended to be family- and pooch-proof. The owners enlisted architect Mike Shaw, who converted the loft area into three bedrooms, extended the living space outwards towards the mountain at the back and put a living area on the second floor, adjoining the patio and garden. The first floor extension includes a home gym and separate flatlet. The whole process was achieved without touching the front facade, and skylights were installed so that the windows on the front walls remained intact, as did the building's Heritage status.

Once the structural changes were under way, Neil Suttie and Floris Marais of Suttie & Marais Designs lent their expert touch to the interiors. Neil says, 'We worked on the owner's home in Joburg and at the time we were also based there. Floris spearheaded the project with the clients' input and he had to fly down to Cape Town twice a month.' The clients wanted to do something to balance the

sombreness of the home's Heritage status and so fun, bold colours, gold accents and contemporary fittings were used to contrast with the exposed brickwork, copper piping and reused wood.

Much of the furniture comes from the couple's home in Joburg and has been reupholstered in bold colours – think fuchsia, purple and gold. 'Because of the sea-facing orientation, the light flowing through the windows is exceptional and, together with the voluminous space, allows for eccentricity in the colour palette,' says Neil.

Upon entering the three-level home, on the first level your eyes are drawn to the bright-pink built-in sofa positioned next to a baby grand, which sets the glamorous tone for the rest of the experience, including art deco copper pendant lamps juxtaposed against the exposed raw brick throughout the home and a curved golden vinyl seating unit nestling against blue velvet curtains in the cinema room. A floating wooden staircase leads to the living area with its navy-blue walls, on which a series of silver



“Because of the sea-facing orientation, the light flowing through the windows is exceptional”





“The top level is a peaceful enclave consisting of the main-en-suite bedroom, two more bedrooms and a bathroom”



Opposite, top to bottom High-tech equipment and modern downlights provide a foil to the beach house feel of the converted loft bedrooms. **This page** Old wingbacks from the family's previous home have been re-upholstered for the contemporary TV nook.



buffalo horns hangs, and an antique wooden dining table is juxtaposed against a large sparkling sapphire-blue granite kitchen countertop that winks at you continuously. And then there is the Midas guest bathroom: inspired by the owners' trip to Paris, where they ate at an all-gold restaurant, it is done up completely in a golden mosaic and features a golden 'throne' too.

The top level is a peaceful enclave consisting of the main-en-suite bedroom, two more bedrooms and a bathroom. The main bedroom has a calm nautical feel, and a glass barrier separates the bathroom from the sleeping area. The other bedrooms have a beach house feel, but with extravagant touches.

According to Neil, the biggest challenge was completing the project in time for the festive season, but despite the mad rush towards completion and the stress of getting the builders out and the pool finished, it was all worth it when the clients called



after seeing the home for the first time and reported that they were exceptionally happy and grateful.

There must've been something in the air in the quaint seaside village of Simon's Town – or maybe it was the great synergy of everyone involved in the transformation of this grand old dame of a property – because shortly after the project was completed the family moved to Cape Town permanently, as did Neil and Floris. The home is now available to rent as a holiday home from Perfect Hideaways. 'Working on this project in Simon's Town made us fall in love with the Cape; the views, the Victorian charm and Heritage buildings are idyllic,' says Neil. We couldn't agree more. 📍

With thanks to ...

Suttie & Marais Design, +27 (0)82 448 8222,

+27 (0)72 298 8527

Perfect Hideaways, +27 (0)21 790 0972,

perfecthideaways.co.za



Opposite The outdoor living area commands views of picturesque Simon's Town.

This page The metallic-hued bathrooms were inspired by the owners' travels.